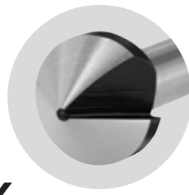




HSS COBALT 1 Flute 90° Countersink



- Simple to sharpen by grinding the face of the flute
- Fully ground M42 HSS-Co8 increases strength and countersink life

Single flute construction provides less aggressive and slower cutting than multi-flutes, therefore reducing the risk of chattering permitting optimum performance for the handyman and portable power tools

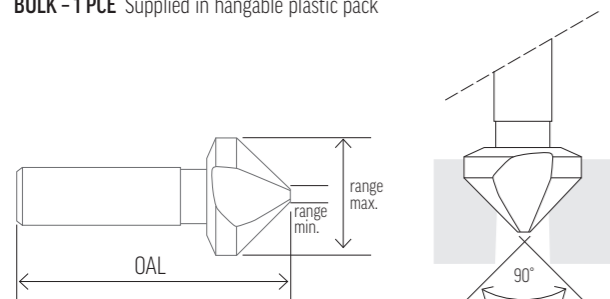
GENERAL PURPOSE countersinking and deburring in low density materials: 		Fully ground HSS COBALT for increased strength & longer life
○ Mild Steel ✗ Hard Steel ● Aluminium	✗ Cast Iron ✗ Brass ✗ Stainless Steel	● Softwood ○ Hardwood ● Soft Plastic ○ Hard Plastic
Legend: ● Optimal ○ Effective ✗ Not recommended		
■■■■■ Productivity speed ■■■■■ Power drill suitability ■■■■■ Machine use suitability		



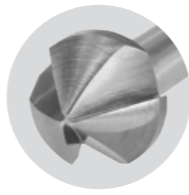
BULK
METRIC

Head ø mm	Head ø inches	OAL mm	Shank ø mm	Range min - max	BULK 1 PCE
10.0	5/16	46.0	6	1 - 10	CS1-10
16.0	5/8	46.5	8	2 - 16	CS1-16
20.0	3/4	47.0	10	2 - 20	CS1-20
25.0	1	51.0	10	3 - 25	CS1-25
30.0	1 3/16	71.0	12	3 - 30	CS1-30

BULK - 1 PCE Supplied in hangable plastic pack



HSS COBALT 3 Flute 90° Countersink



- Fully ground M42 HSS-Co8 increases strength and countersink life

Three flute construction reduces chip load and controls chatter, which permits higher feed rates. Recommended machine use for accurate speed and feed rates for optimum results.

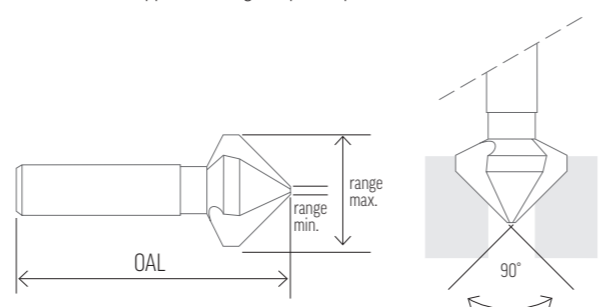
GENERAL PURPOSE countersinking and deburring in high density materials: 		Fully ground HSS COBALT for increased strength & longer life
● Mild Steel ✗ Hard Steel ● Aluminium	✗ Cast Iron ✗ Brass ✗ Stainless Steel	○ Softwood ● Hardwood ○ Soft Plastic ● Hard Plastic
Legend: ● Optimal ○ Effective ✗ Not recommended		
■■■■■ Productivity speed ■■■■■ Power drill suitability ■■■■■ Machine use suitability		



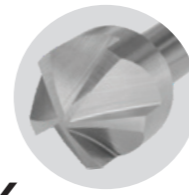
BULK
METRIC

Head ø mm	Head ø inches	OAL mm	Shank ø mm	Range min - max	BULK 1 PCE
6.3	1/4	46	5	1 - 6.3	CS3-6.3
8.3	21/64	46	6	1 - 8.3	CS3-8.3
10.4	13/32	54	6	1 - 10.4	CS3-10.4
12.4	1/2	54	8	2 - 12.4	CS3-12.4
14.4	9/16	56	8	2 - 14.4	CS3-14.4
16.5	21/32	60	10	2 - 16.5	CS3-16.5
20.5	13/16	63	10	2 - 20.5	CS3-20.5
25.0	1	51	10	3 - 25.0	CS3-25
30.0	1 3/16	71	12	3 - 30.0	CS3-30
40.0	1 9/16	80	13	3 - 40.0	CS3-40

BULK - 1 PCE Supplied in hangable plastic pack



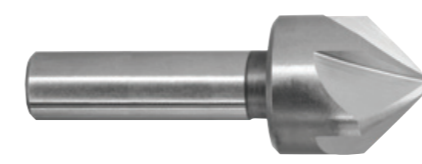
HSS AL 5 Flute 90° Countersink



- Fully ground HSS-AL increases strength and countersink life

Five flute construction provide optimum stability in hard materials for fast productivity with a fine finish. Perfect for stainless steel. Recommended machine use for accurate speed and feed rates for optimum results.

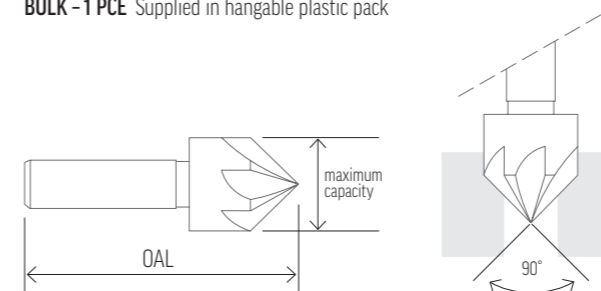
GENERAL PURPOSE countersinking and deburring: 		Fully ground HSS AL for increased strength & longer life
● Mild Steel ● Hard Steel ● Aluminium	● Cast Iron ● Stainless Steel	○ Softwood* ○ Hardwood* ○ Soft Plastic* ○ Hard Plastic*
Legend: ● Optimal ○ Effective ✗ Not recommended		
■■■■■ Productivity speed ■■■■■ Power drill suitability ■■■■■ Machine use suitability		*Restrict speed to 85RPM for plastic and wood to avoid chattering



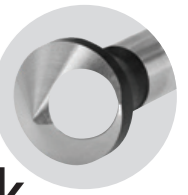
BULK
METRIC

Head ø mm	Head ø inches	OAL mm	Shank ø mm	Maximum capacity	BULK 1 PCE
8.0	5/16	35	5.00	8	CS5-8
12.0	1/2	39	6.35	12	CS5-12
16.0	5/8	52	8.00	16	CS5-16
20.0	3/4	58	10.00	20	CS5-20

BULK - 1 PCE Supplied in hangable plastic pack



HSS COBALT Cross Hole 90° Deburrer Countersink



- Fully ground M42 HSS-Co8 increases strength and countersink life

The cross hole construction is the most universal product suiting the widest range of materials. Optimum deburrer results are obtained in ferrous and non-ferrous metals. Countersinking optimum results are obtained in softer materials such as wood or plastic, however fluted countersinks are more suited for countersinking hard metals.

GENERAL PURPOSE countersinking and deburring: 		Fully ground HSS COBALT for increased strength & longer life
Deburring:		
● Mild Steel ● Hard Steel ● Aluminium	● Cast Iron ● Stainless Steel ● Brass	○ Softwood ○ Hardwood ○ Soft Plastic ○ Hard Plastic
Countersinking:		
✗ Mild Steel ✗ Hard Steel ● Aluminium	✗ Cast Iron ✗ Brass ✗ Stainless Steel	● Softwood ● Hardwood ● Soft Plastic ● Hard Plastic
Legend: ● Optimal ○ Effective ✗ Not recommended		
■■■■■ Productivity speed ■■■■■ Power drill suitability ■■■■■ Machine use suitability		



BULK
METRIC

Head ø mm	Head ø inches	OAL mm	Shank ø mm	Range min - max	BULK 1 PCE
10.0	5/16	46.0	6	4 - 9	CSCH-10
14.0	35/64	46.0	8	6 - 13	CSCH-14
21.5	27/32	64.5	10	8 - 19	CSCH-21
28.0	1 7/64	80.0	12	10 - 24	CSCH-28
35.0	1 3/8	97.0	15	12 - 32	CSCH-35
44.0	1 47/64	115.0	15	16 - 40	CSCH-44

BULK - 1 PCE Supplied in hangable plastic pack

